



# People, planet, profit;

*maintaining ethical sourcing principles  
in a profit driven context*

# STONECHANGE 2016 - STONE SECTOR and CHANGING TRENDS

Carrara 16-17 June 2016



INTERNAZIONALE  
MARMI E MACCHINE  
CARRARA SPA



PERC  
Pavimento in  
Elementi in  
Cemento  
Pulviscolati  
e Cementati



ALFA ROMEO  
Gruppo Tecnico  
di Ricerca



# STONECHANGE 2016 - STONE SECTOR and CHANGING TRENDS

Carrara 16-17 June 2016



INTERNAZIONALE  
MARMI E MACCHINE  
CARRARA SPA



PERC  
Pavimento in  
Cemento e  
Rivestimenti  
Ceramici



ALFA ROMEO  
Gruppo Finanziario  
del Nord



COMITATO NAZIONALE  
DEI GEOLOGI





# #1 PRINCIPLES



**P**eople

**E**nvironment

**T**raceability



# People



“Quarrying remains one of the most dangerous industries to work in, since 2000 over 3500 workers have suffered an injury reportable to HSE, 31 of those being fatal”.

*The UK Health & Safety Executive*

# People



*The main causes of occupational injury and ill health in the UK quarry industry are:*

- Manual handling / musculoskeletal injuries
- Falls from heights
- Transport
- Slips and trips
- Hand-arm vibration
- Asthma
- Noise
- Silica
- Explosives

# People



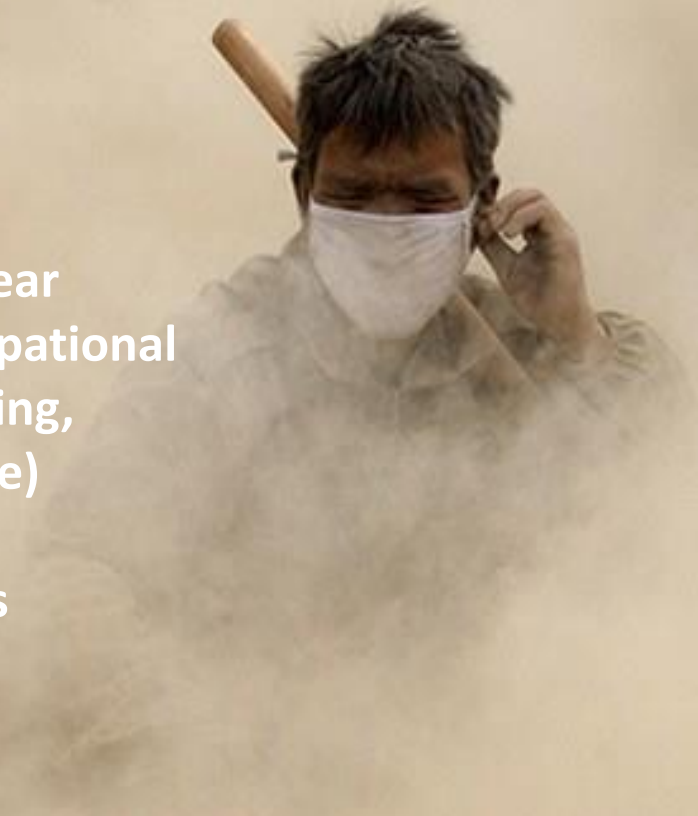
In recent years the UK quarrying industry has worked hard to try and reduce accidents. Over the past 10 years the number of reportable accidents has fallen by 76% which has coincided with a target-based strategy initially known as the "Quarry Hard Target".

Despite significant improvements, the fatal injuries rate is still over 20 times the "all industry average" and the all injuries rate is 1.5 times the "all industry average", so more needs to be done.

# People

## *Internationally*

- 250,000 deaths per year annually due to occupational lung diseases (quarrying, mining and agriculture)
- 46,000 due to silicosis



# People

*Duty of Care!*

# Responsibility

# People

## *Exemplar*



# {Wellbeing}

Health & Safety at work and social responsibility has played a key role in Trentino since 1930

# People

*Exemplar*

*Community engagement*



CASA  
PORFIDO  
ALBIANO



# People

*Exemplar*



*Community engagement*



CASA  
PORFIDO  
ALBIANO



# People

*Exemplar  
Apprenticeships*



# People

## Exemplar

### Retaining Artisan Skills



# Environment

“Unless carefully managed, quarrying can scar the landscape”.

© [HTTP://SCEMPPIOAPIANE.BLOGSPOT.IT](http://scempioapiane.blogspot.it)

# Environment

'Blue Lagoon' Derbyshire, England.  
Former limestone quarry

## Warning!

Do not enter water, due to high pH levels.

This can cause:

- .Skin and eye irritations
- .Stomach problems
- .Fungal infections such as thrush
- .Other infections such as rashes

**Think!** would you swim in ammonia  
(pH 11.5) or bleach (pH 12.6)?

Well these are similar to the  
Blue Lagoon (pH 11.3)!

# Environment

'Blue Lagoon' Derbyshire, England.  
Former limestone quarry

# Environment

- Stone is one of the heaviest commodities to transport
- In the EU, stone is mostly transported by road



# Environment

- Better by rail



# Environment

## *Exemplar*



# Environment

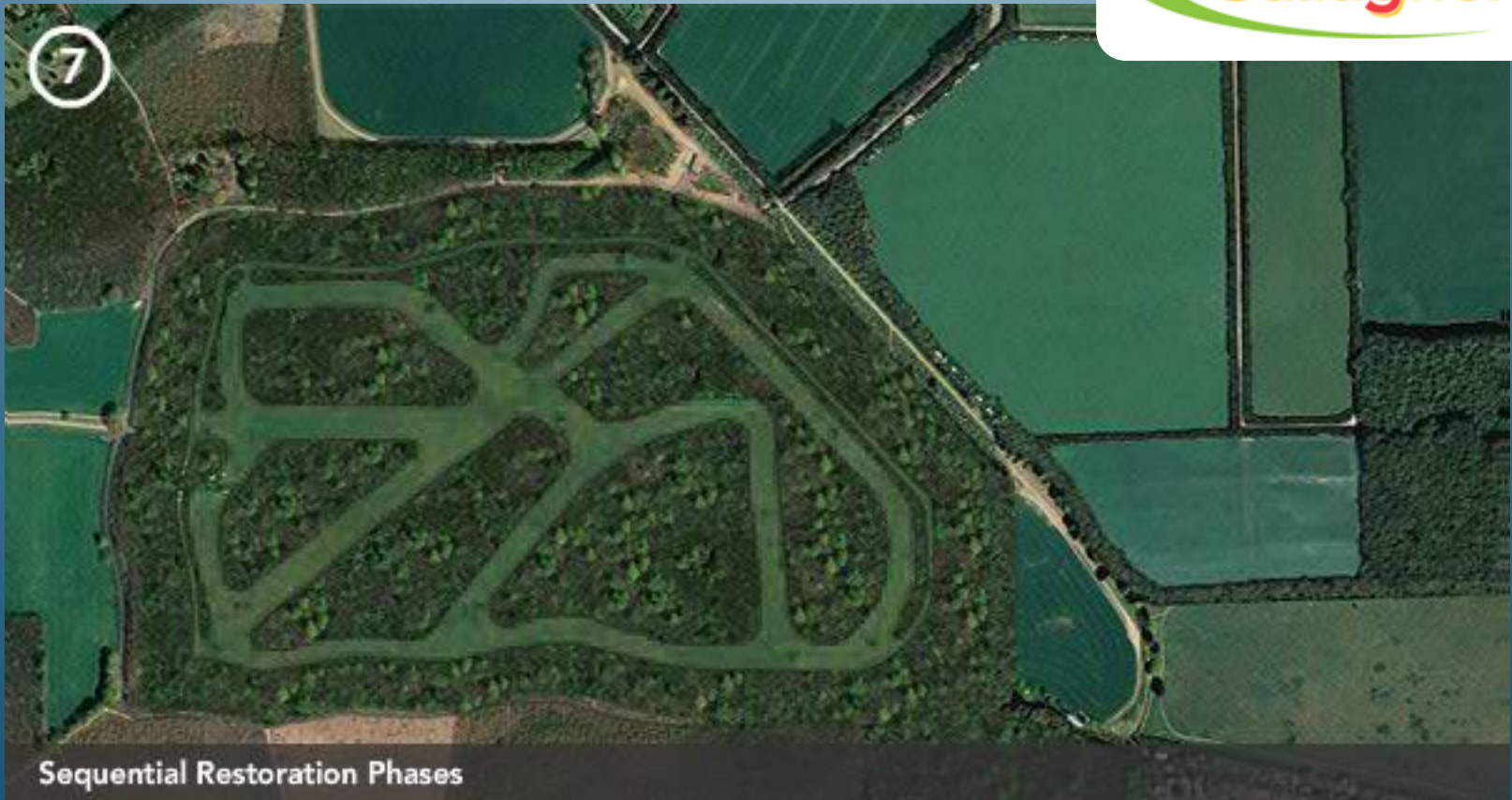
## *Exemplar*

### *Planned Sequential Restoration of Hermitage Quarry, Kent, England*

By quarrying small sequential phases of Oaken Wood, there will be no need to clear large areas of chestnut and the amount of undisturbed woodland is maximised



# Environment



## #1 PRINCIPLES

# Environment

## *Exemplar*

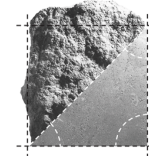
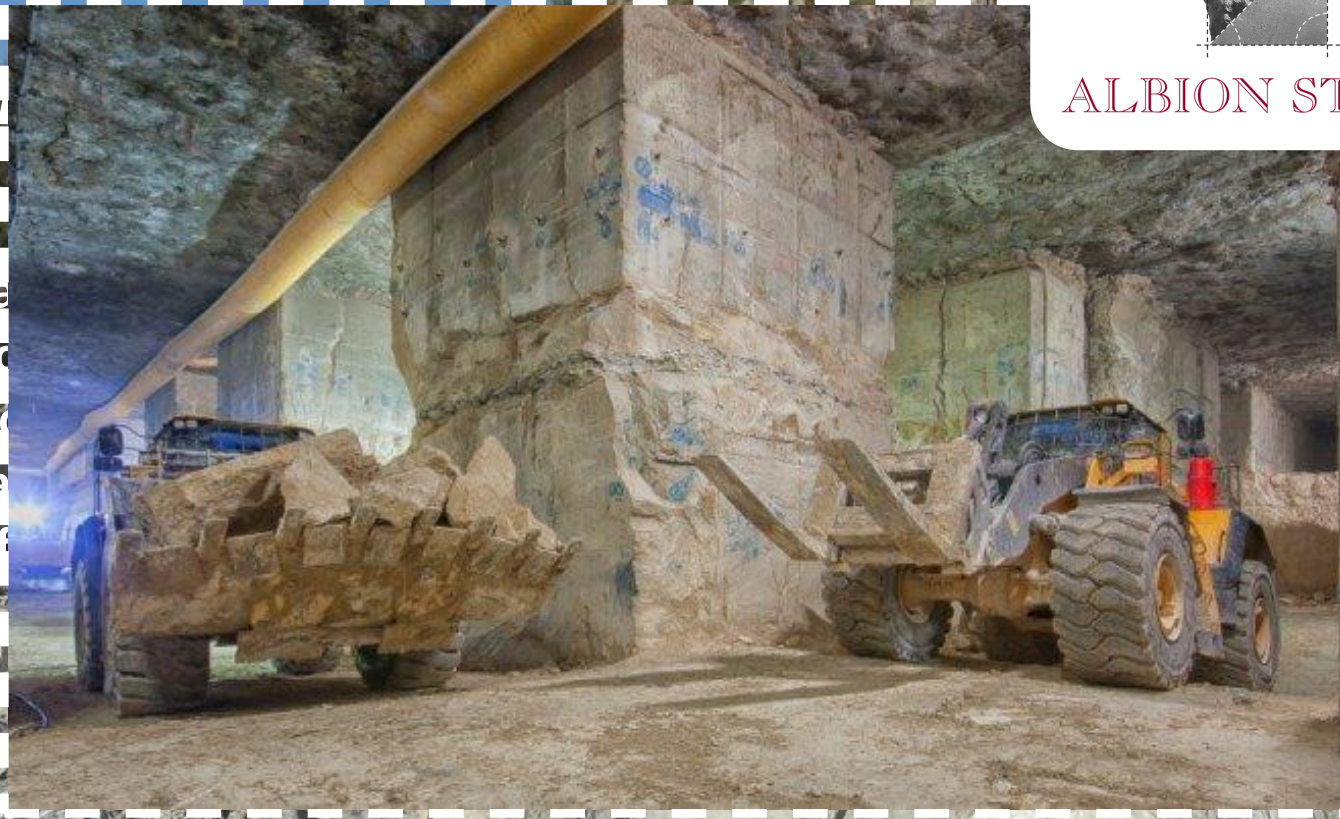
“An important strategy to guide our environmental management is controlling and reducing water consumption and energy while managing waste. This is the reason why we have a closed water circuit, which allows us to recycle water while properly managing generated waste”.



# Environment

Exer

“To expand  
regulation  
underground  
Stone can  
playing f



ALBION STONE



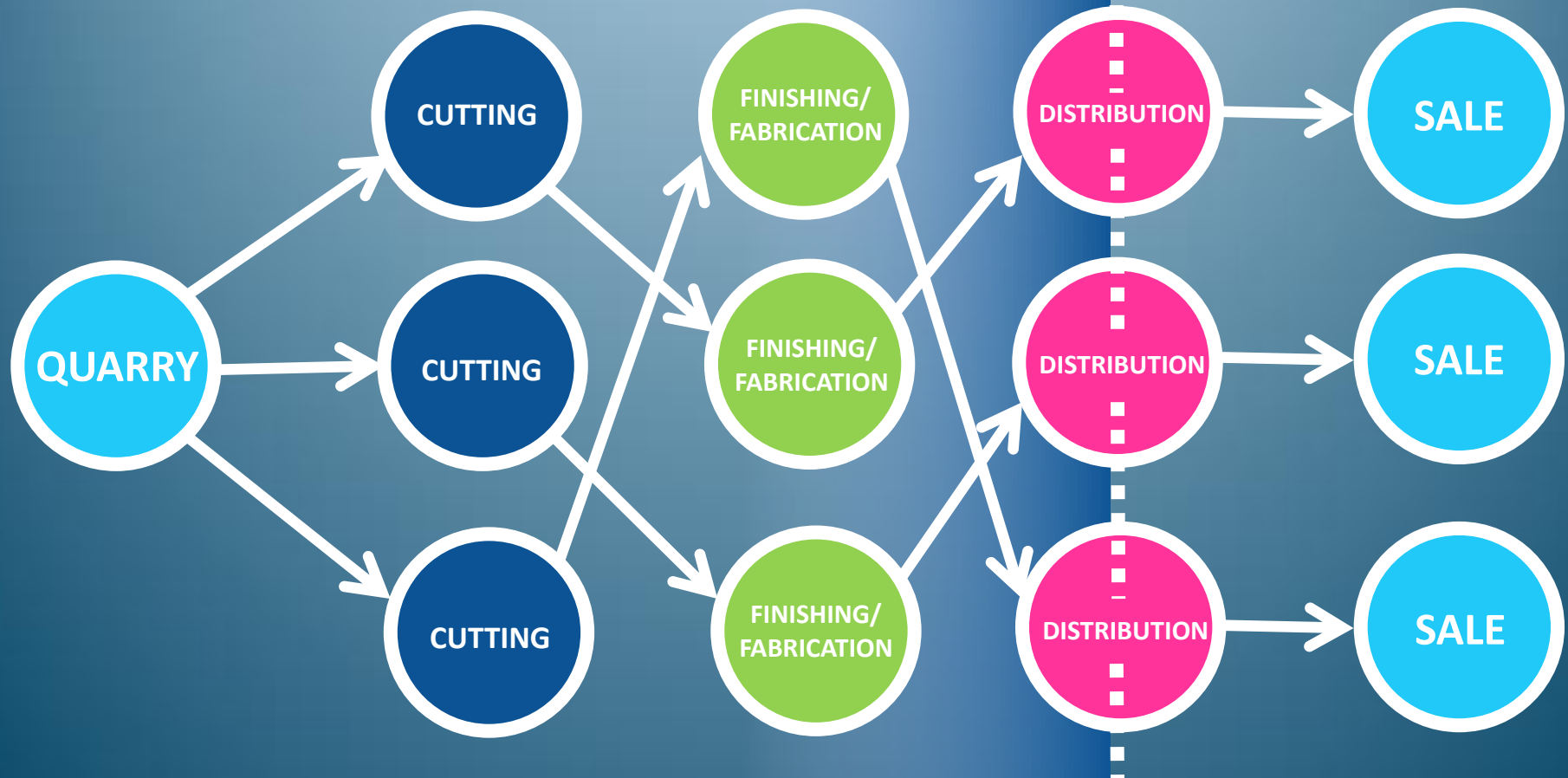
# Traceability



Stone is a commodity—the basic material from which a product is made—and value is added through cutting, finishing and fabrication, as well as distribution and resale through the supply chain.

This can take place at a multiplicity of locations.

# Traceability



# Traceability

## Why is traceability so important?

**Without traceability,  
how can we  
measure the impact  
on People and the  
Environment?**



## **#1 PRINCIPLES**

# Traceability

© [HTTP://SCEMPIOAQUANE.BLOGSPOT.IT](http://scempioaquane.blogspot.it)



# STONECHANGE 2016 - STONE SECTOR and CHANGING TRENDS

Carrara 16-17 June 2016



INTERNAZIONALE  
MARMI E MACCHINE  
CARRARA SPA



PERC  
Pavimento in  
Elementi in  
Cemento  
Pulviscolati  
Cementati



ALFA ROMEO  
Gruppo Tecnico  
di Ricerca

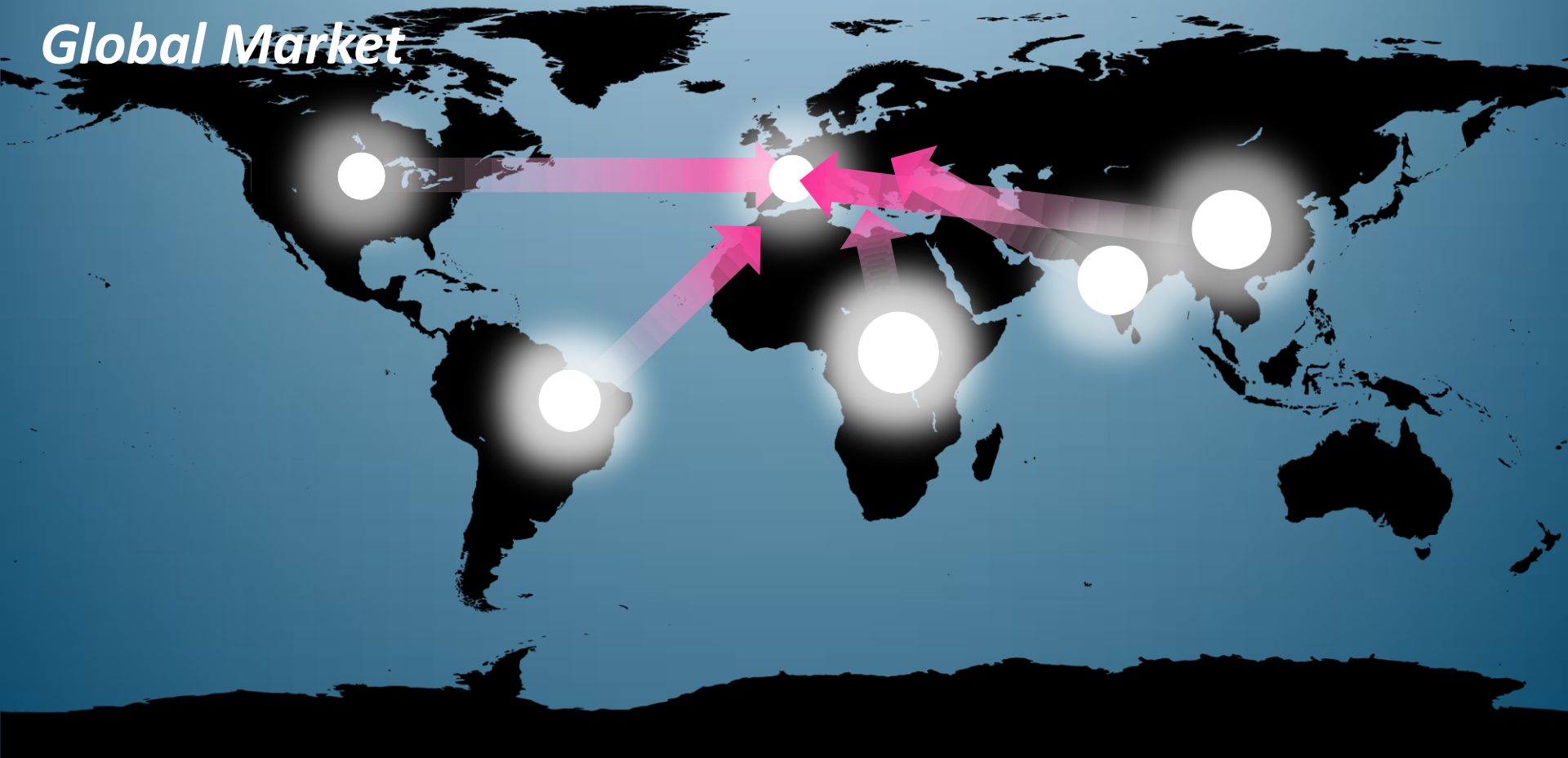




# #2 THREATS

# Threats

## Global Market

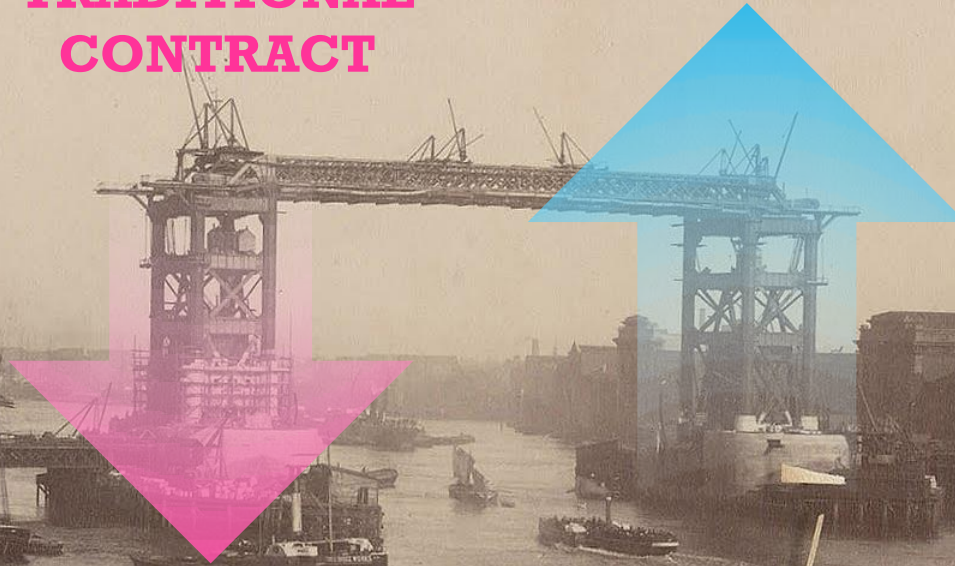


# Threats

*Price Pressure*

**DESIGN  
& BUILD**

**TRADITIONAL  
CONTRACT**



# Threats

*Price Pressure*

**CHEAPER LESS  
ETHICAL STONE**

**PRICE**



# Threats

## *Weak Specifications*

“or equal approved”

# Threats

*Lack of overall  
cohesive certification*





# #3 RESPONSE

# Response

*A concerted, global,  
collaborative  
approach*



# Define the sources

*Specifiers:*

*You have the power to influence!*

# Consensus

“

*1. Ethical Sourcing - There are various different degrees of controls of ethical sourcing across Europe and some is at a very local level. It was accepted that the EU should be encouraging stones from ethical sources.*

*It was agreed that the starting point should be to pool all the experiences from the differing methods currently being used by different countries, companies and organisations.”*

EUROROC



NATURAL  
STONE

# Hard to Define



*“The UK Contractors Group, recognising the inherent risks in sourcing dimensional stone, will give preference to suppliers demonstrating leadership in the ethical stewardship of their supply chain. This can be evidenced through compliance with a recognised responsible sourcing scheme, certified by a third party, or active participation in the Ethical Trading Initiative (ETI Stone Group), the TFT Responsible Stone Program, or the United Nations Global Compact and membership of the Stone Federation GB.”*

# Clear Brand/Mark

## *Exemplar*

“Successful because they are recognised and clearly defined hallmarks of responsible forest management”





## Vision

A single, independent  
– clearly defined  
and recognised hallmark for  
“Ethical Stone”

Manufacturers



ALBION STONE



Green Certification Schemes

BREEAM®



Industry Bodies



EUROROC



Constructors



WILLMOTT DIXON





**Thank you**  
**Grazie**